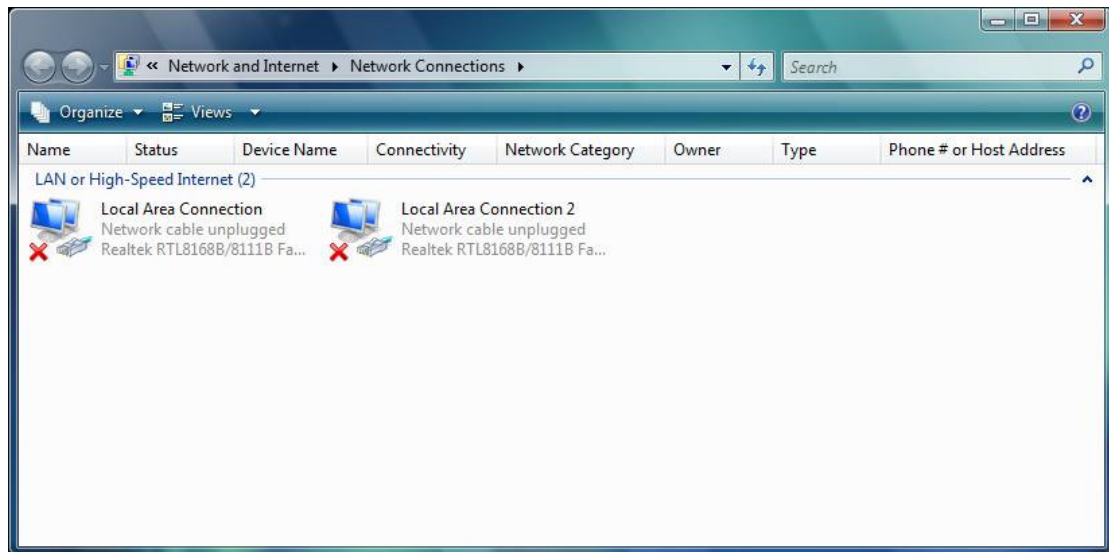
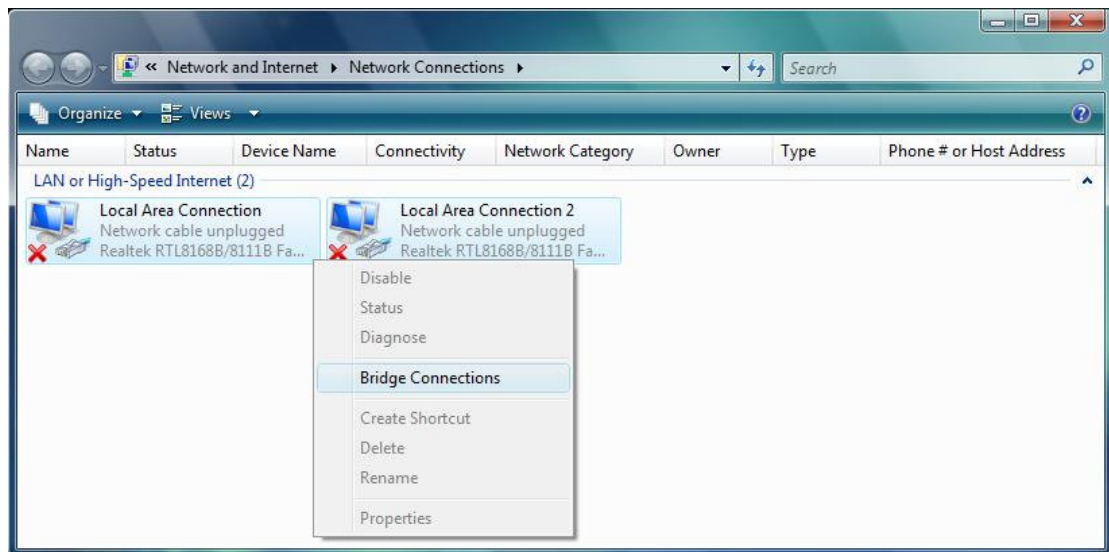


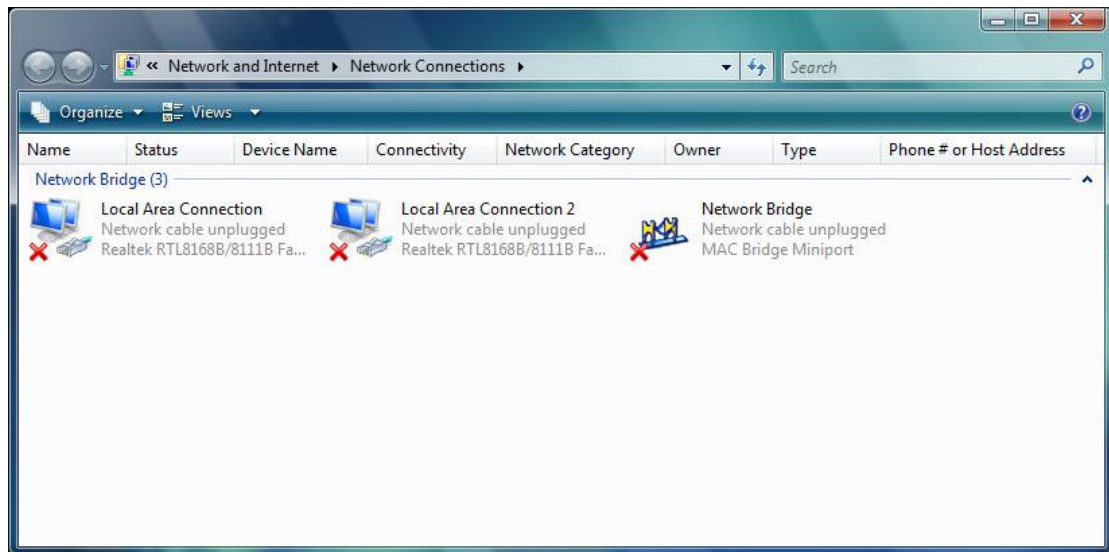
Please kindly enter “Control Panel\ Internet Connection”.



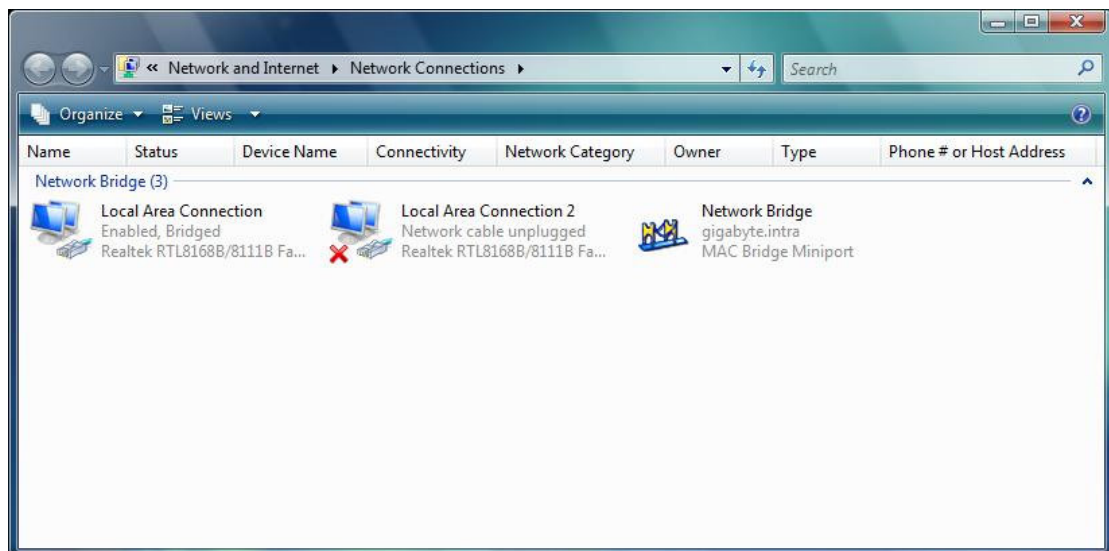
Please circle both of two “Local Area Connection” icons and right-click then select "Bridge Connections".



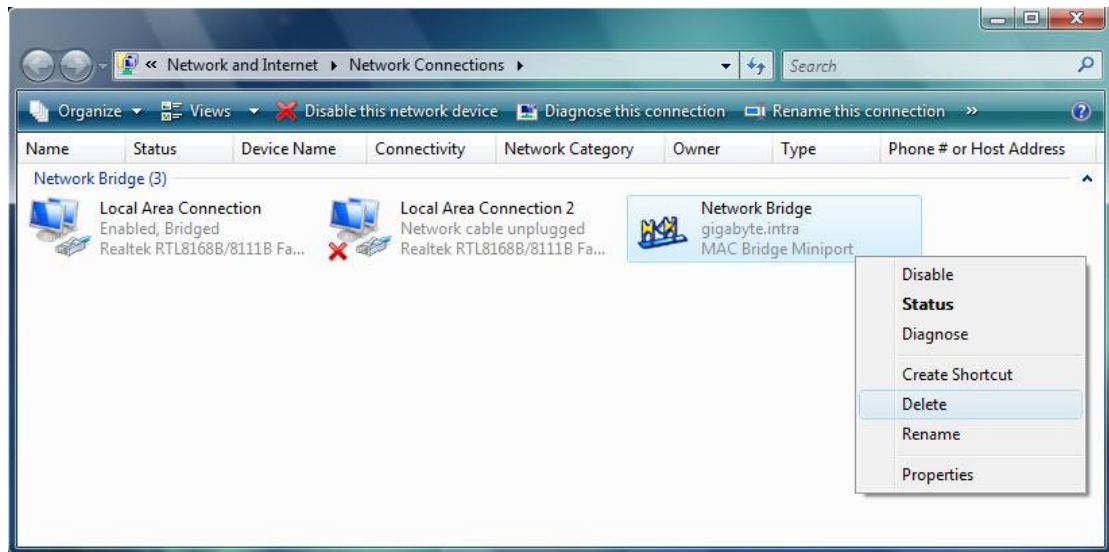
After that, there will be a “Network Bridge” icon.



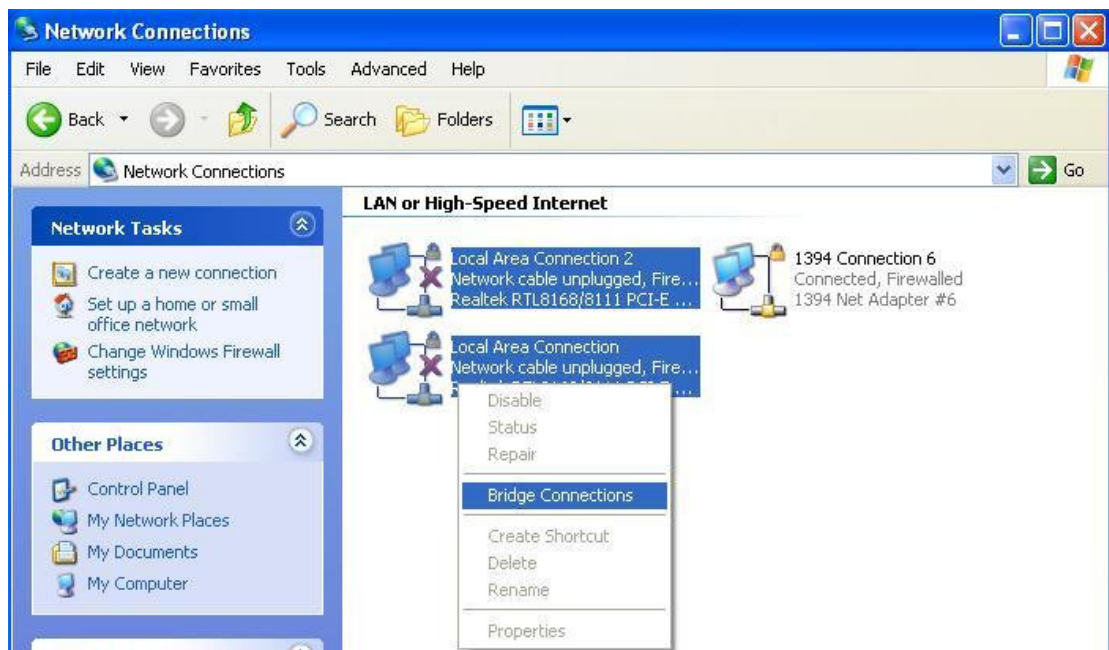
After connecting network cable, icons will change.



If you want to turn off the “Network Bridge” function, please right-click “Network Bridge” and then select “Delete”.



You can find similar settings under Windows XP.



After connecting network cable, only one icon will change.

