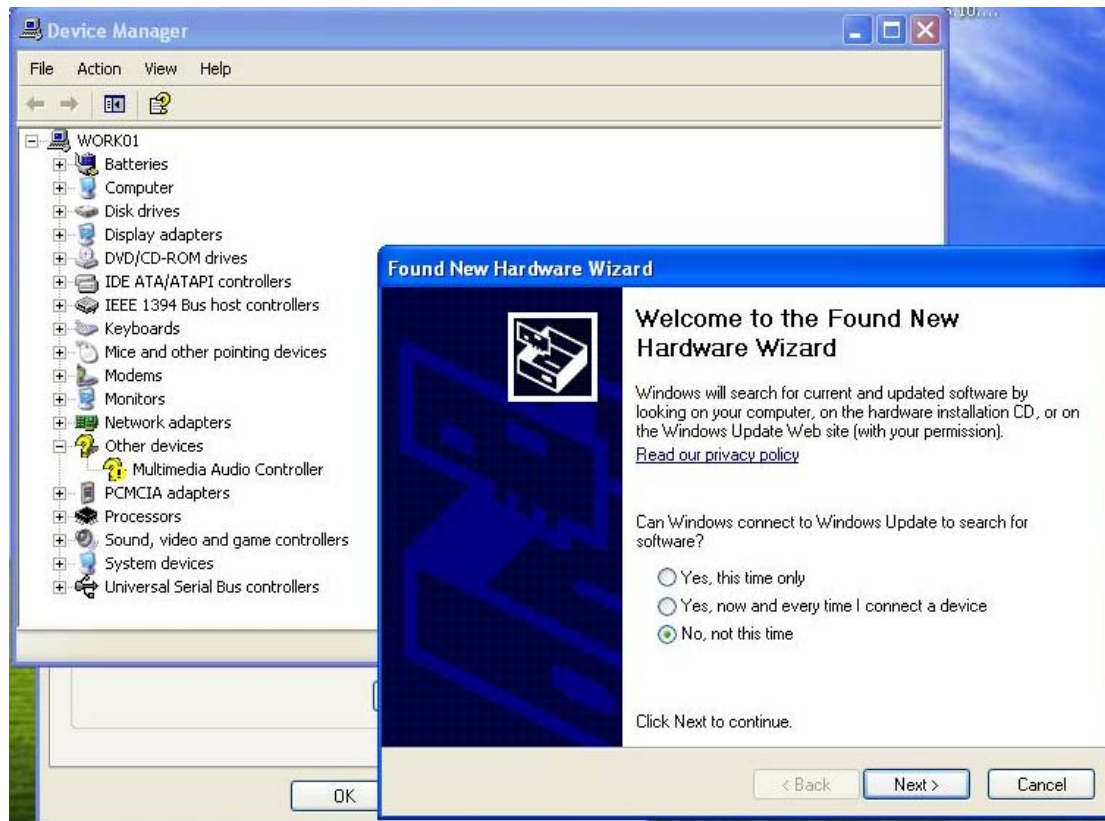


Q: How to install driver manually?

A:

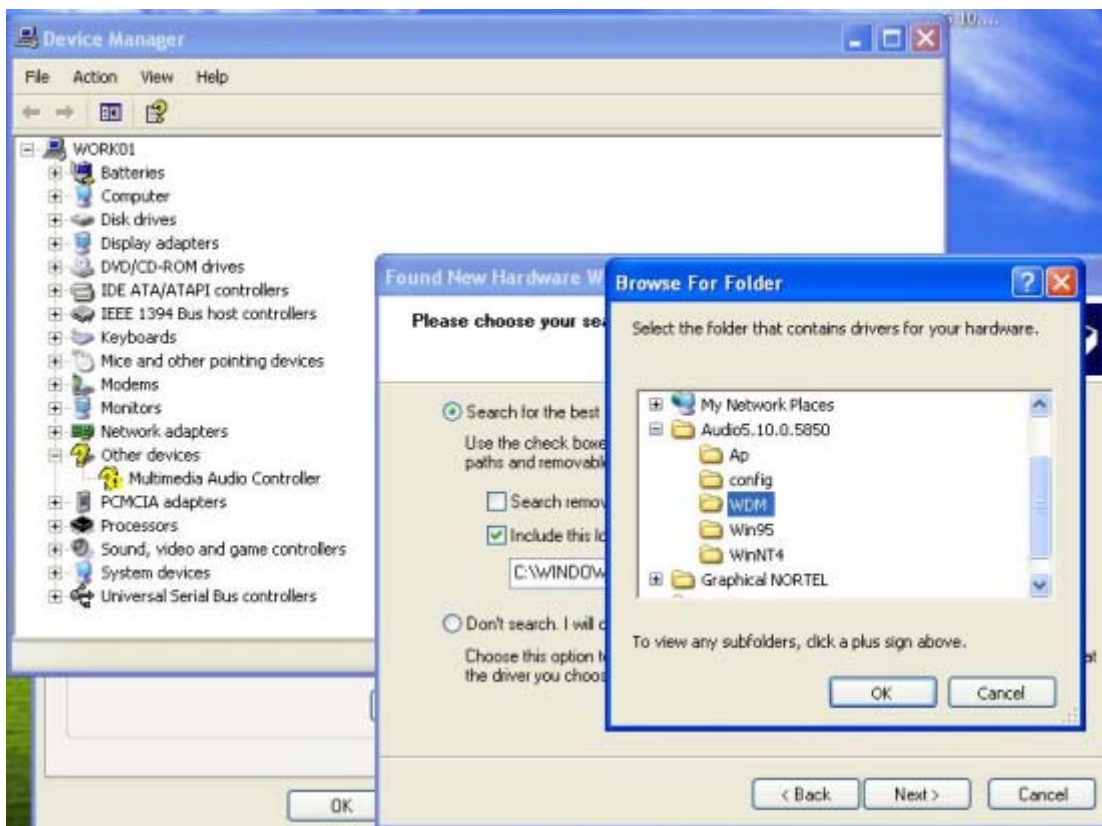
1. Go to device manager and you will see there is a yellow mark. You can right click on it to update the driver. Sometimes the system will jump up a “Found New Hardware Wizard” window automatically. You can choose “No, not this time”. (If driver was installed, make sure you uninstall it first and reboot the system in advance to these procedures.)



2. Choose Install from a list or specific location (Advanced)



3. Choose the directory where you extract the files to then click OK. (If you want to install audio driver for Windows 2000 or XP, kindly direct the folder to WDM. Otherwise, you can just choose the folder which specific to the OS you use.)



4. Then it can work correctly.

